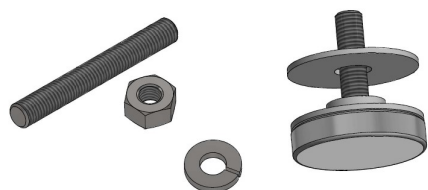


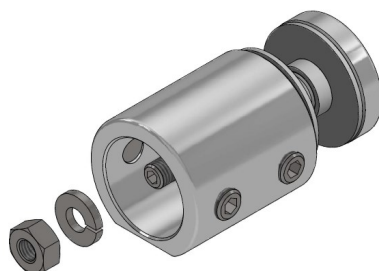
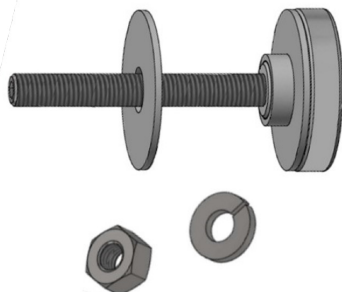
Cres 90 Return Panel/Accessory Kit

SKU: ACRES78 (ACRES90)



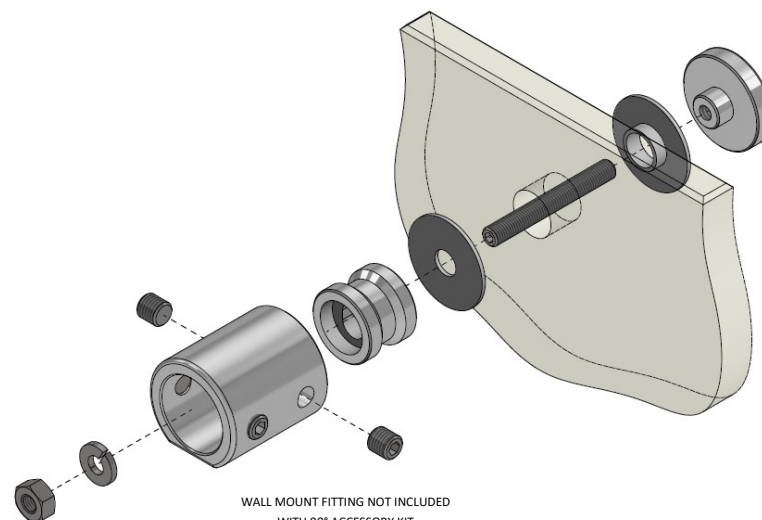
STEP 1:

USING THE CAP ASSEMBLY KIT WITH THE 2" HEX HEAD SET SCREW FIRMLY ATTACHED AND THE MOLDED WASHER IN PLACE, INSERT THE CAP ASSEMBLY THROUGH THE FABRICATED GLASS RETURN PANEL, FOLLOWED BY THE FLAT PLASTIC WASHER TO PREVENT GLASS TO METAL CONTACT.



STEP 2:

MOUNT THE WALL FITTING PROVIDED WITH THE SHOWER KIT, ADD LOCK WASHER FIRST, FOLLOWED BY THE LOCK NUT, AND FASTEN SECURELY. INSTALLATION IS NOW COMPLETE.

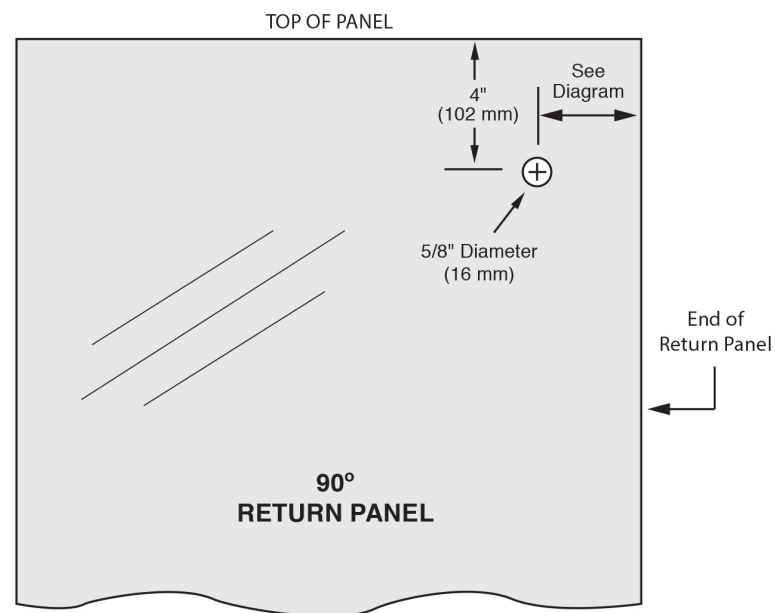
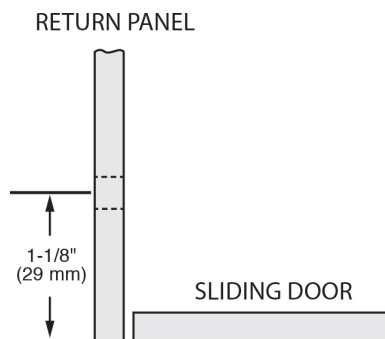
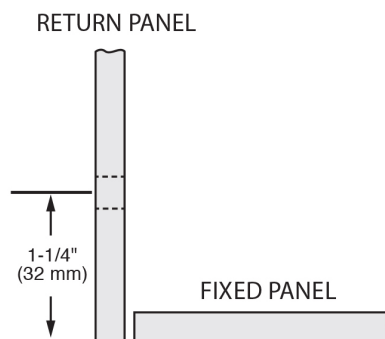
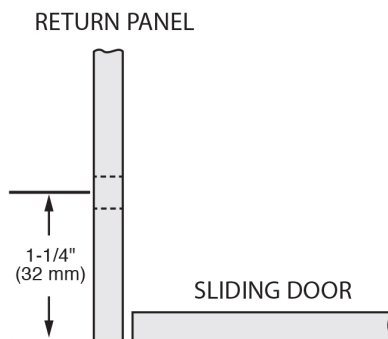
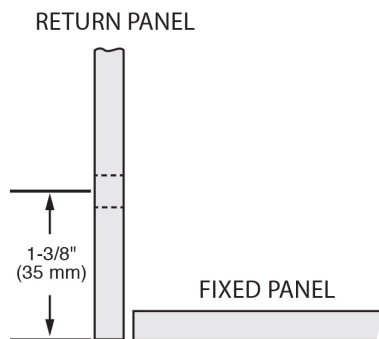


WALL MOUNT FITTING NOT INCLUDED
WITH 90° ACCESSORY KIT



Cres 90 Return Panel/Accessory Kit

SKU: ACRES78 (ACRES90)



T-3018_06/24