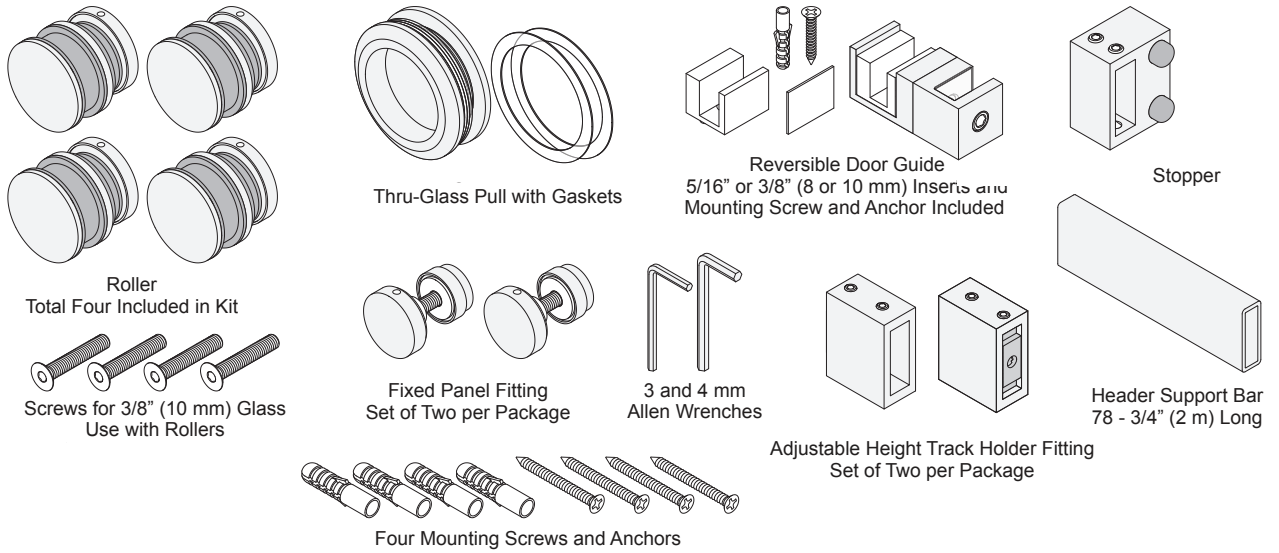


DELUXE SERENITY SERIES SLIDING DOOR KIT

Installation Instructions

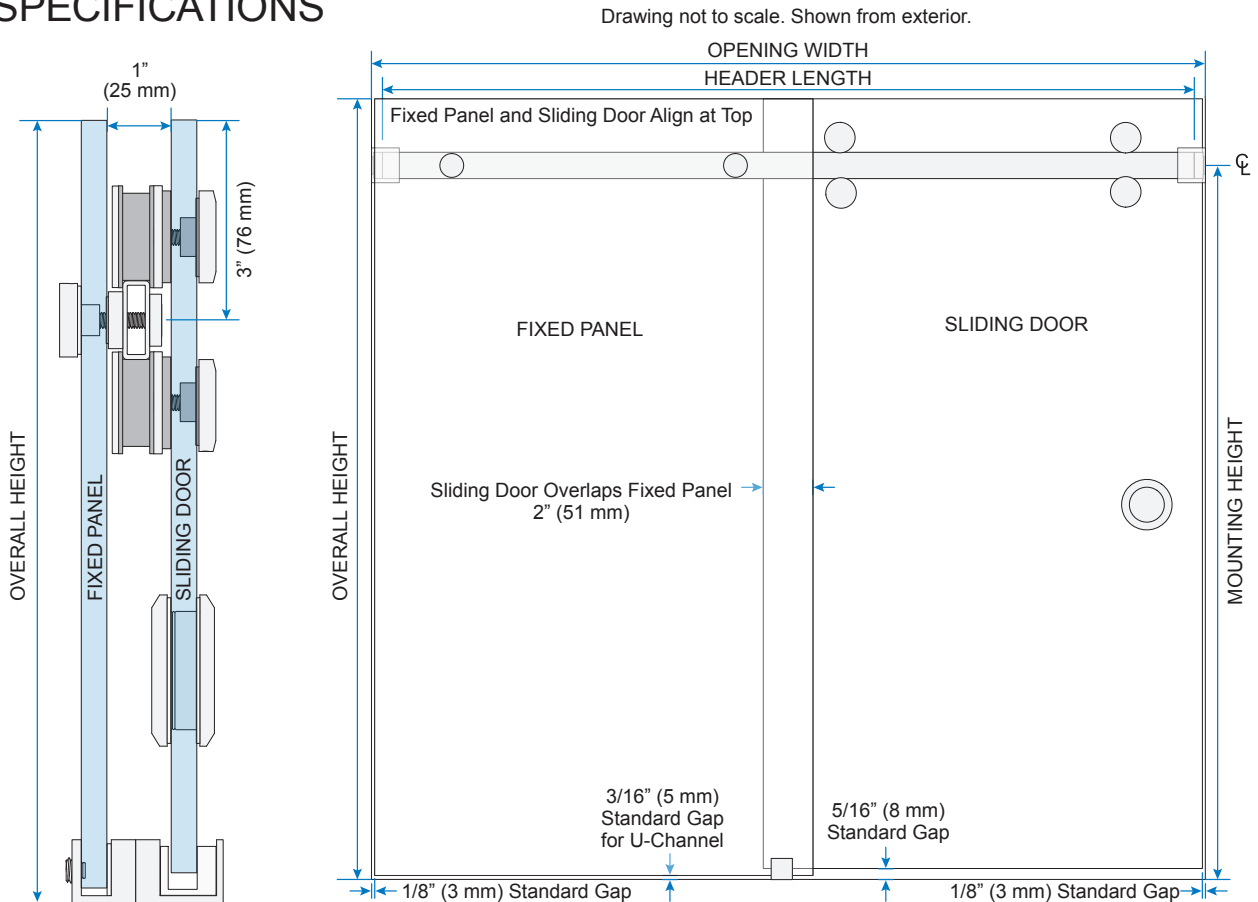


PARTS LIST



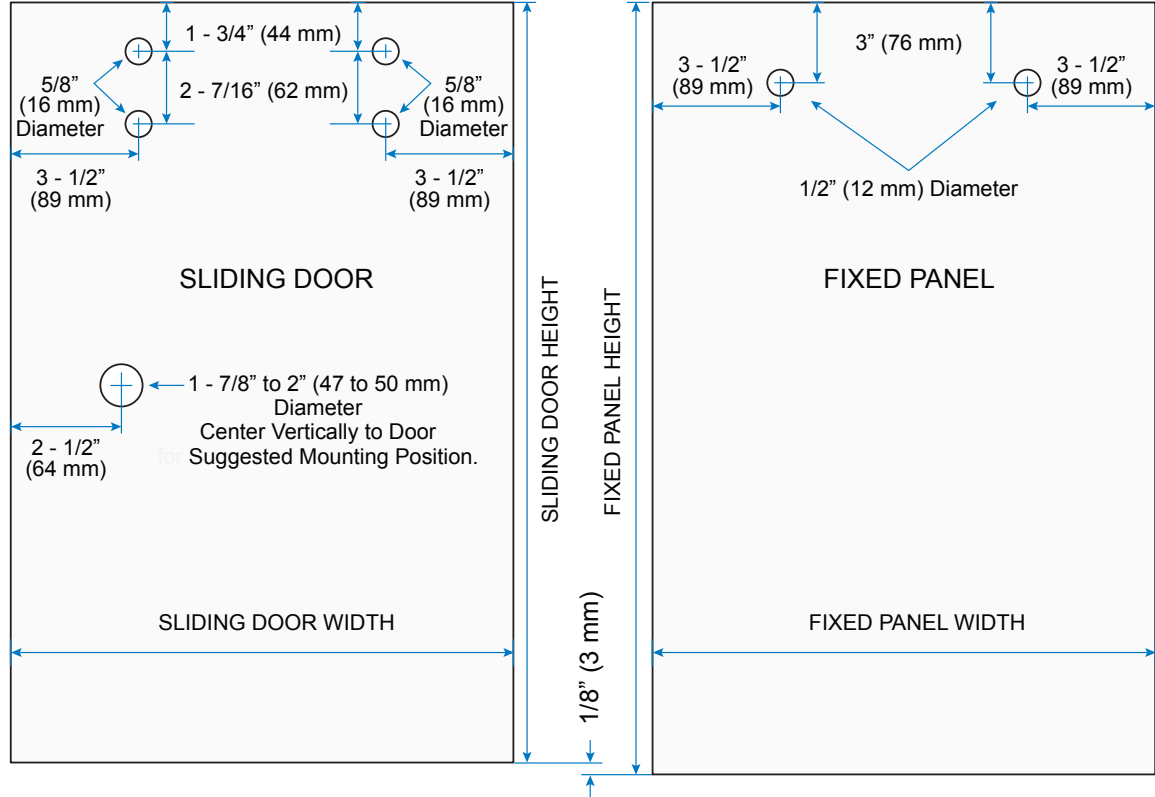
NOTE: Track Holder Mounting Fittings, Longer Screws for Rollers and Tools Packed with Fixed Panel Fittings

SPECIFICATIONS



GLASS FABRICATION

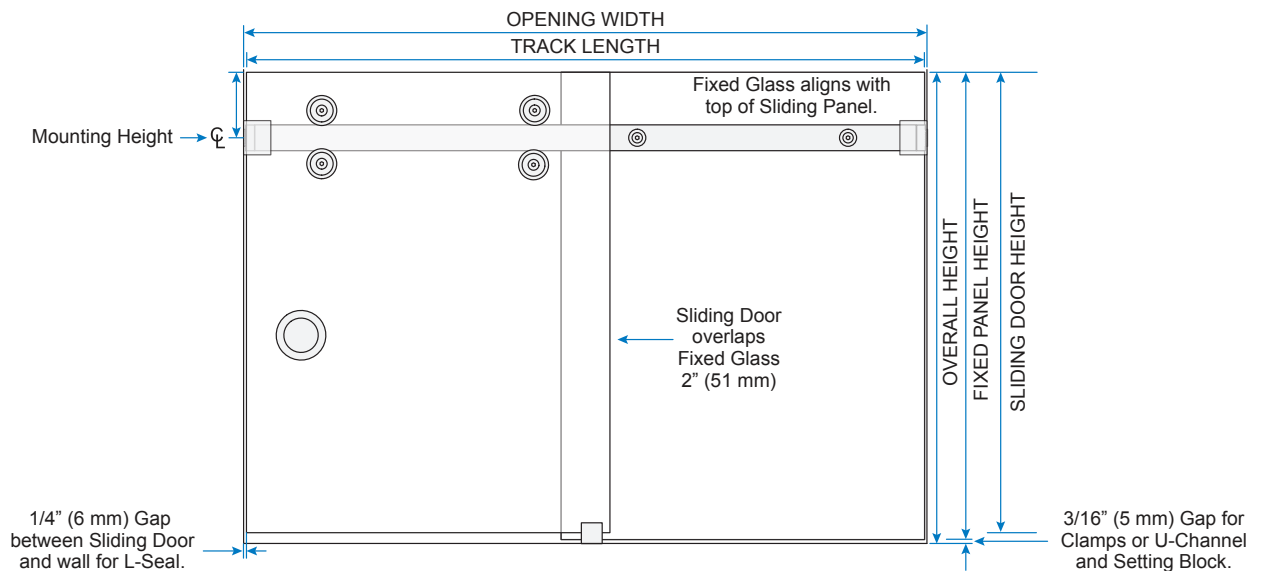
NOTE: For use with 5/16" to 3/8" (8 - 10 mm) Tempered Glass only. Do Not use Laminated Glass.



SLIDING DOOR AND FIXED PANEL WIDTH : Overall Width Divided by 2, plus 7/8" (22 mm)

FIXED PANEL HEIGHT : Overall Height minus 3/16" (5 mm)

SLIDING DOOR HEIGHT : Overall Height minus 5/16" (8 mm)



SLIDING DOOR PREPARATION

Unpack Rollers

- ① Unpack and disassemble two sets of Rollers.

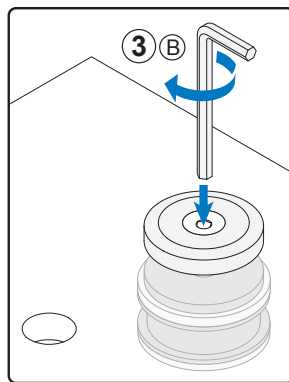
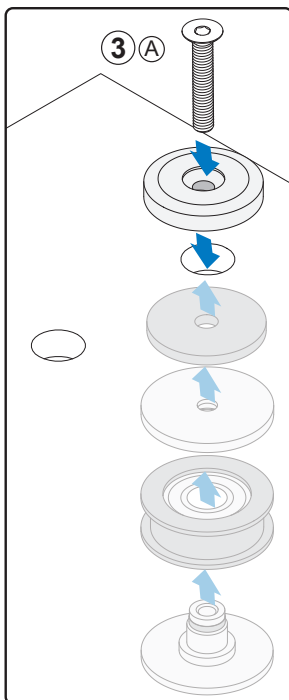
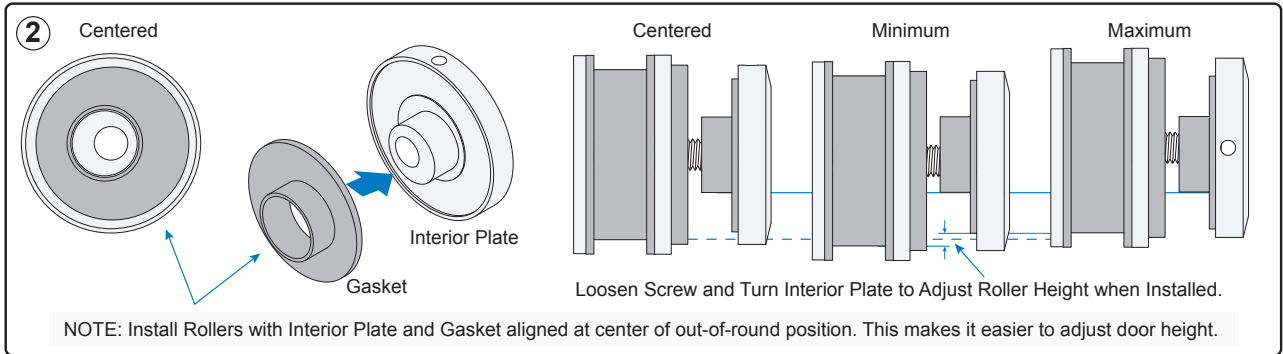
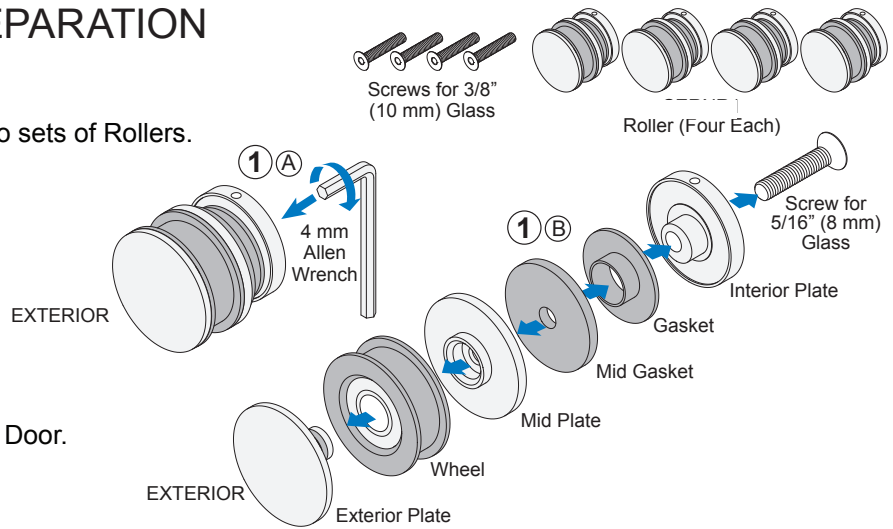
NOTE: Rollers shipped assembled with screws for 5/16" (8 mm) Glass. Screws for 3/8" (10 mm) Glass and Allen Wrench packaged with Fixed Panel Fittings.

- ② Adjust wheel height.

Install Top Rollers

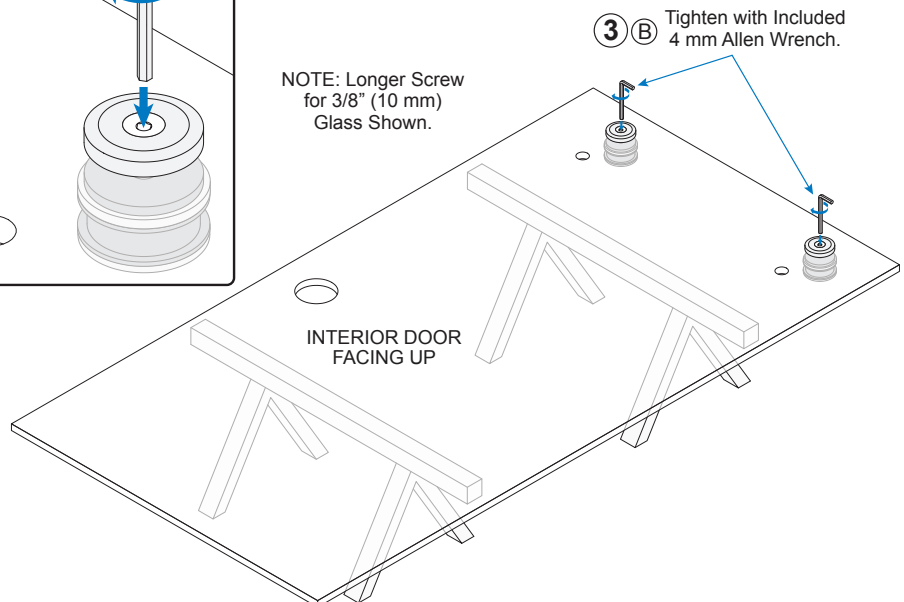
- ③ Install Top Rollers on Sliding Door.

NOTE: Lower Rollers are installed after door is hung. See Page 10.



Install Top Rollers.
Lower Rollers installed
after door is hung.

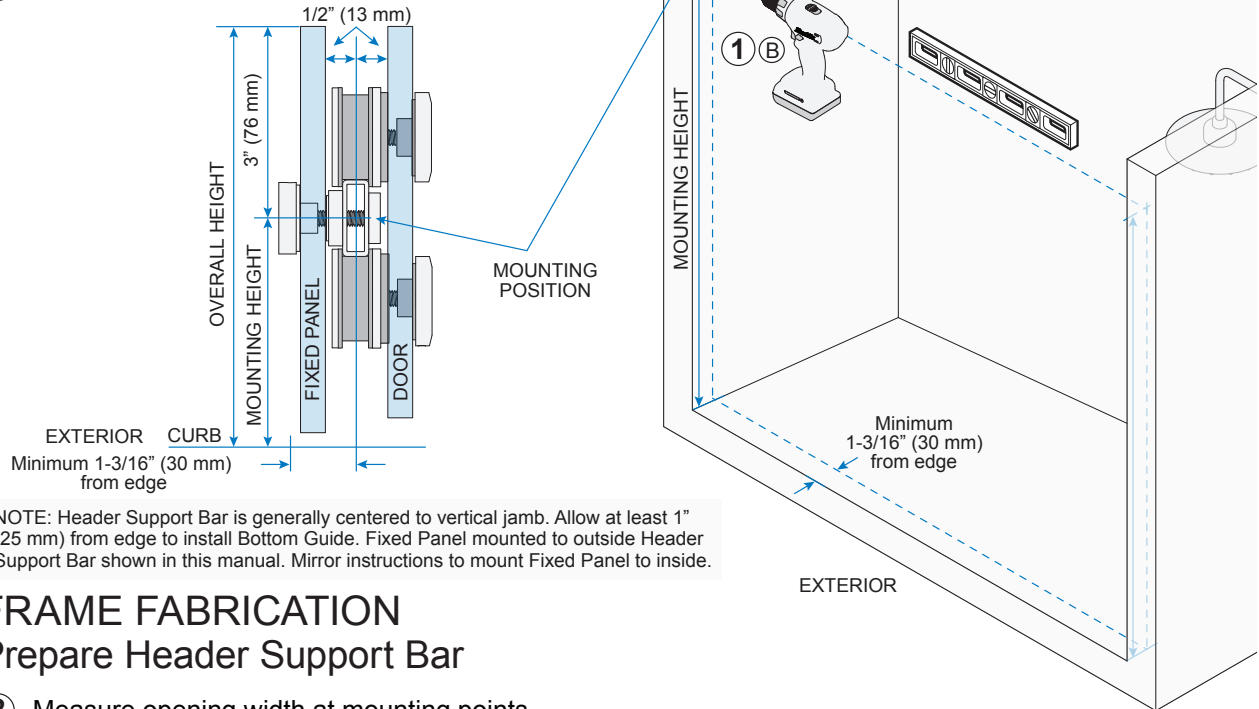
NOTE: Longer Screw
for 3/8" (10 mm)
Glass Shown.



SITE PREPARATION

Mark Location for Header Support Bar

- 1 Mark and drill holes for Header Support Bar.

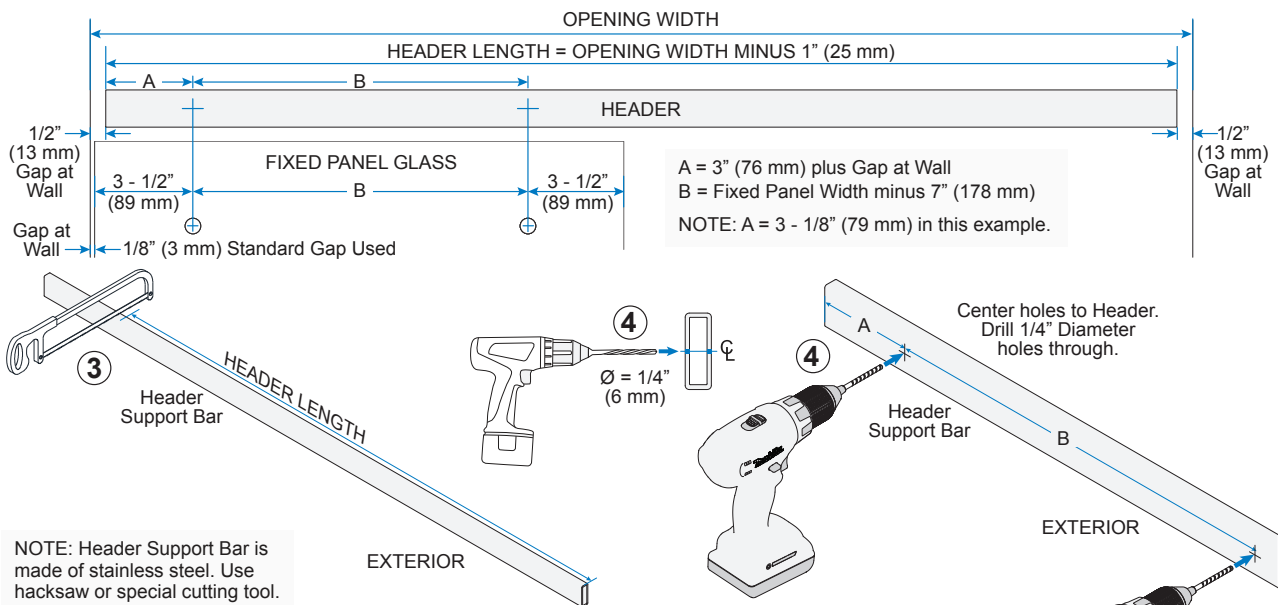


FRAME FABRICATION

Prepare Header Support Bar

- 2 Measure opening width at mounting points.
- 3 Cut SERH2 Header Support Bar.
- 4 Drill holes for Fixed Panel Fittings.

NOTE: Header Support Bar is cut 1" (25 mm) short from tight dimension and centered in opening, leaving 1/2" (13 mm) gap on each end to mount. Refer to Fixed Panel Glass fabrication and gap allowance between Fixed Panel and wall to determine mounting hole placement.



FRAME INSTALLATION

Mount Track Holder Fittings

- 1 Unpack Track Holder Fittings. Loosen Set Screws and remove Mounting Blocks.
- 2 Fasten Mounting Blocks to wall.

Install Stopper

- 3 Unpack and loosen Set Screws on top and bottom of Stopper.

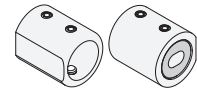
Install Header

- 4 Slide Stopper and Track Holder Fittings onto Header.

NOTE: Orient Stopper with Rubber Bumpers facing center and Track Holder Fittings with rounded end facing center.

- 5 Align Header with Mounting Block. Slide Track Holder Fittings to wall and tighten Set Screws to secure.

NOTE: Track Holder Fittings shown orientated for installation. Set Screws at end hold Base to Mounting Block while second Set Screws secure Base to Header when installed.

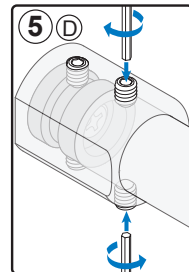
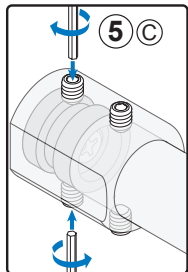
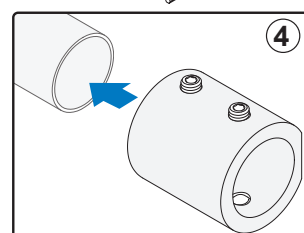
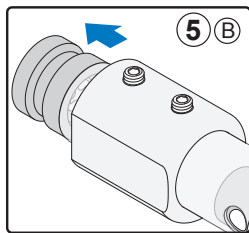
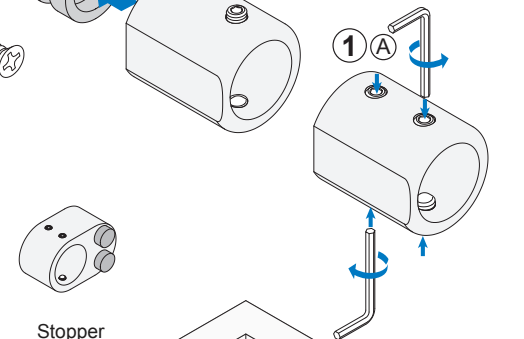
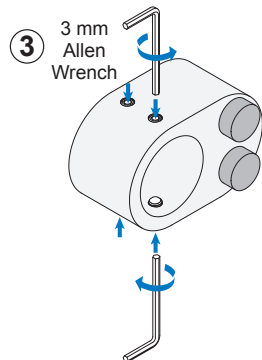
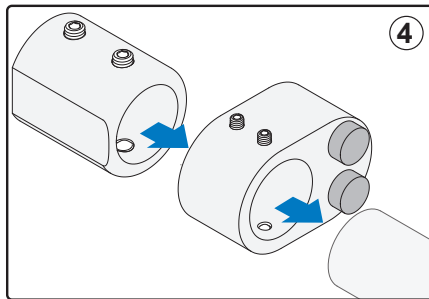


Track Holder Fitting



Screws and Anchors

Install Mounting Blocks with oval hole at horizontal. If needed, loosen screws and turn oval to vertical. Move up or down to level Header.



NOTE: Ensure Header is level. If not, loosen screws holding Mounting Blocks to adjust height.

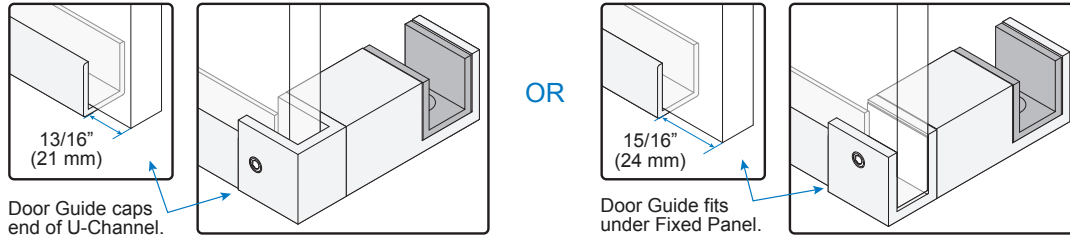
EXTERIOR

FRAME INSTALLATION (CONTINUED)

Bottom Guide Mounting Options and U-Channel Preparation (Optional)

NOTE: Fixed Panel may be fastened to curb with clamps. Use dimensions shown below to calculate length of U-Channel for each mounting option.

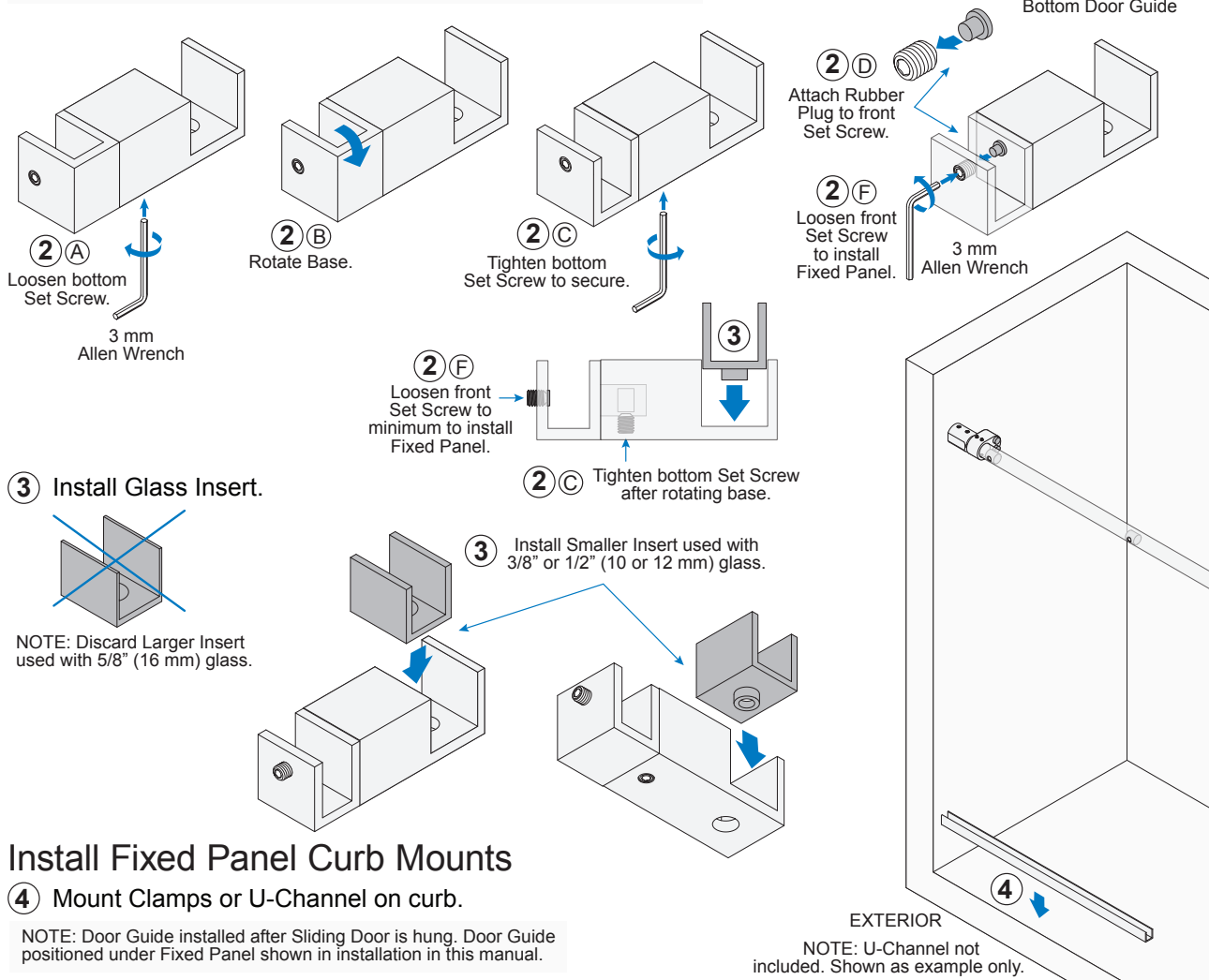
1 Determine Bottom Door Guide mounting option.



Unpack and Prepare Bottom Door Guide

2 Unpack Bottom Door Guide. Rotate orientation if needed. (Optional)

NOTE: Door Guide shipped oriented to cap Fixed Panel on right. Loosen bottom Set Screw and rotate base to change orientation. Select smaller of two included inserts.



Install Fixed Panel Curb Mounts

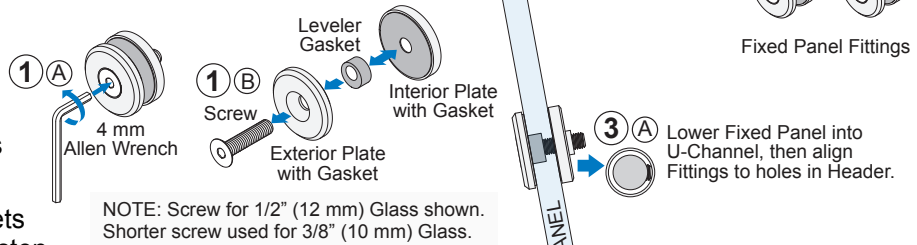
4 Mount Clamps or U-Channel on curb.

NOTE: Door Guide installed after Sliding Door is hung. Door Guide positioned under Fixed Panel shown in installation in this manual.

FRAME INSTALLATION (CONTINUED)

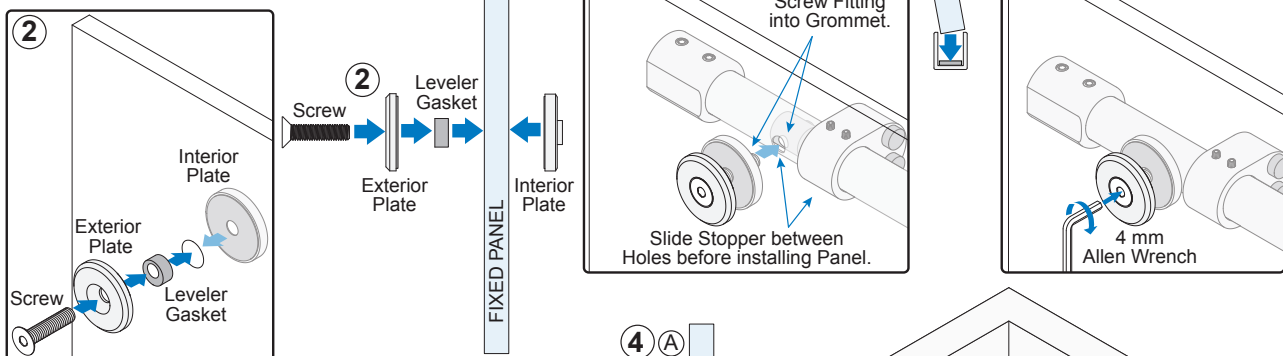
Install Fixed Panels

- 1 **Unpack and disassemble Fixed Panel Fittings.**
- 2 **Attach Fixed Panel Fittings to Fixed Panel.**
- 3 **Align Fittings with Grommets in Header Bar. Securely fasten.**



NOTE: Screw for 1/2" (12 mm) Glass shown. Shorter screw used for 3/8" (10 mm) Glass.

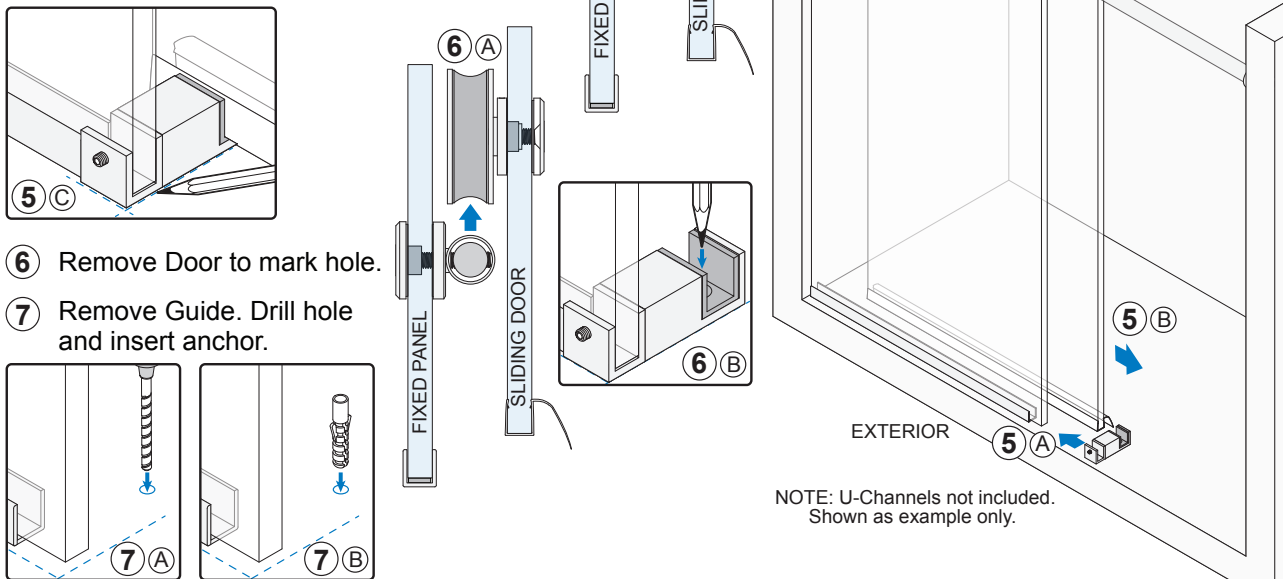
NOTE: If Grommets are not centered, loosen Track Holder Set Screws and rotate Header Bar.



Place Bottom Door Guide

- 4 **Hang Sliding Door and carefully slide back and forth to check height.**
- 5 **Place Door Guide to engage with Sliding Door. Close Door, adjust Guide position and outline.**

NOTE: See Page 5 to Prepare Door before hanging and to adjust Roller height if needed.

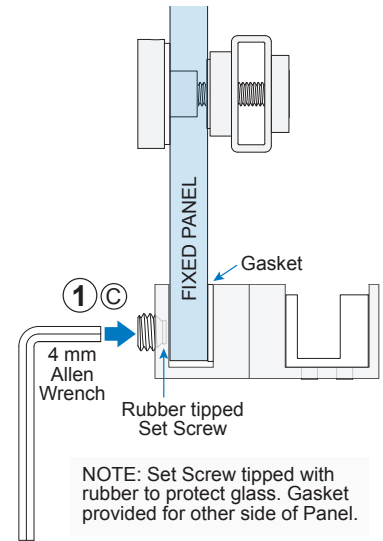
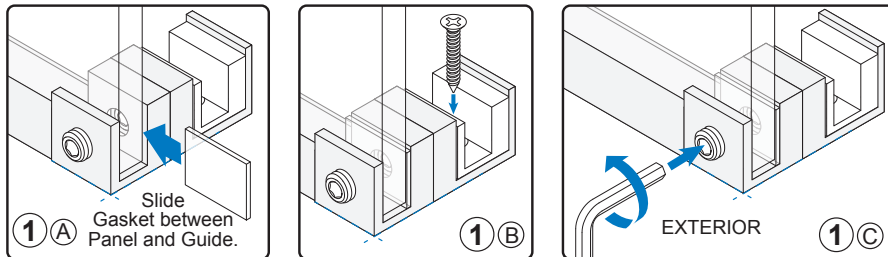


NOTE: U-Channels not included. Shown as example only.

FRAME INSTALLATION (CONTINUED)

Install Bottom Door Guide

- Fasten Bottom Door Guide and tighten Set Screw to Fixed Panel.



SLIDING DOOR INSTALLATION

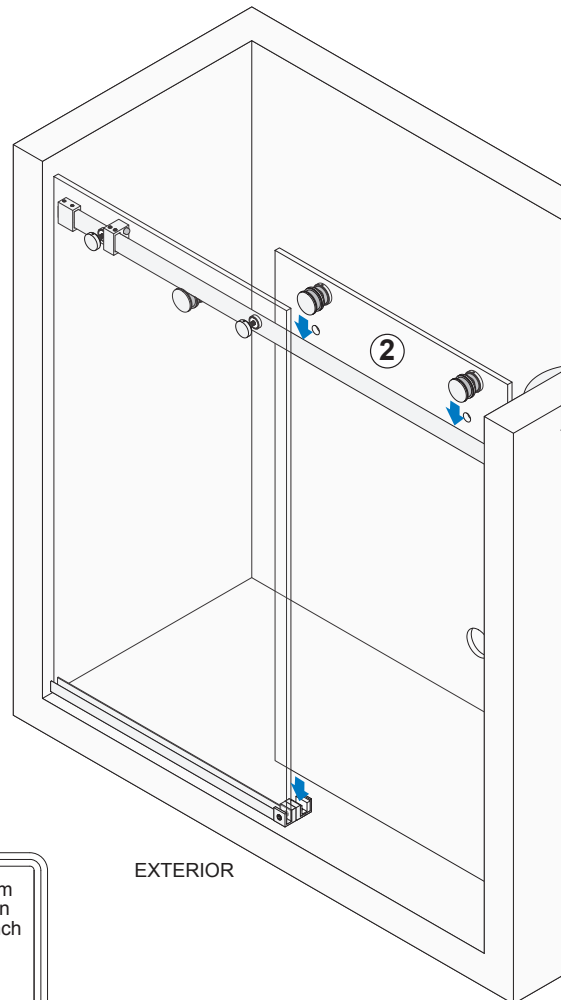
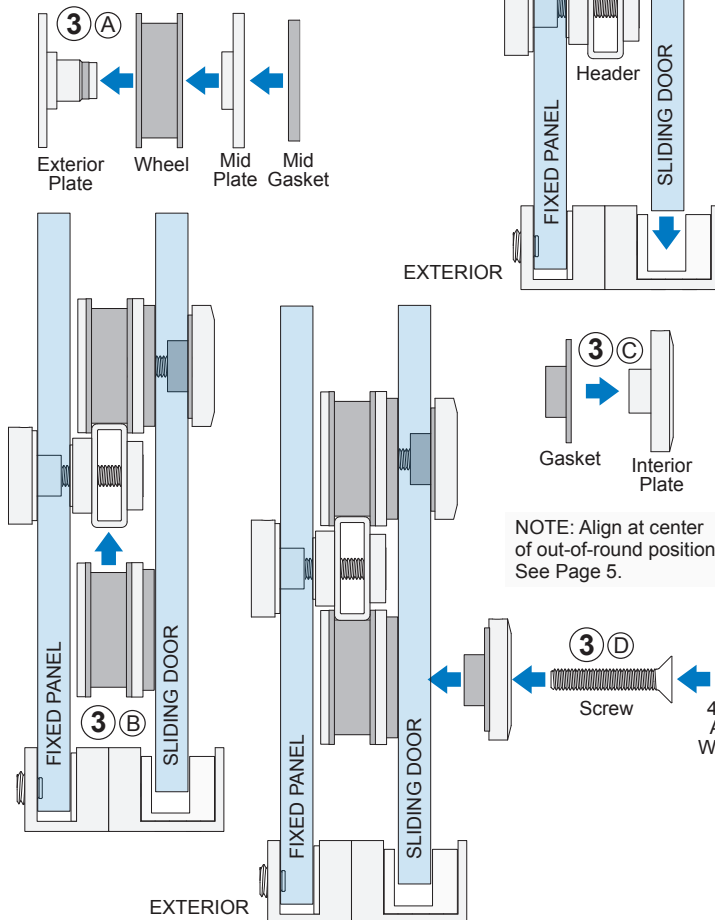
Hang Sliding Door

- Hang Sliding Door placing Glass inside Bottom Guide.

Install Bottom Rollers

- Prepare and install Bottom Rollers.

NOTE: See Page 5 before installing Rollers.



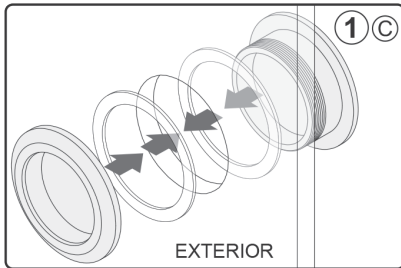
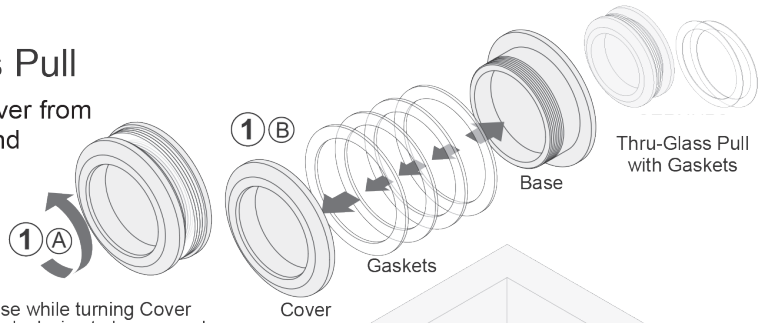
NOTE: Screw for 3/8" (10 mm) Glass shown. Shorter screw used for 5/16" (8 mm) Glass.

FINISHING

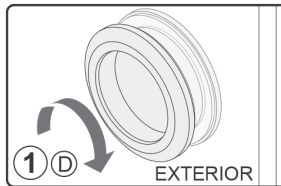
Unpack and Install Thru-Glass Pull

- 1 Unscrew Thru-Glass Pull. Separate Cover from Base, select combination of gaskets, and reassemble on Sliding Glass Door.

NOTE: Three pairs of Gaskets in various widths included. Select one gasket or combine several to obtain desired thickness. Place on each side of glass so Pull is snug.

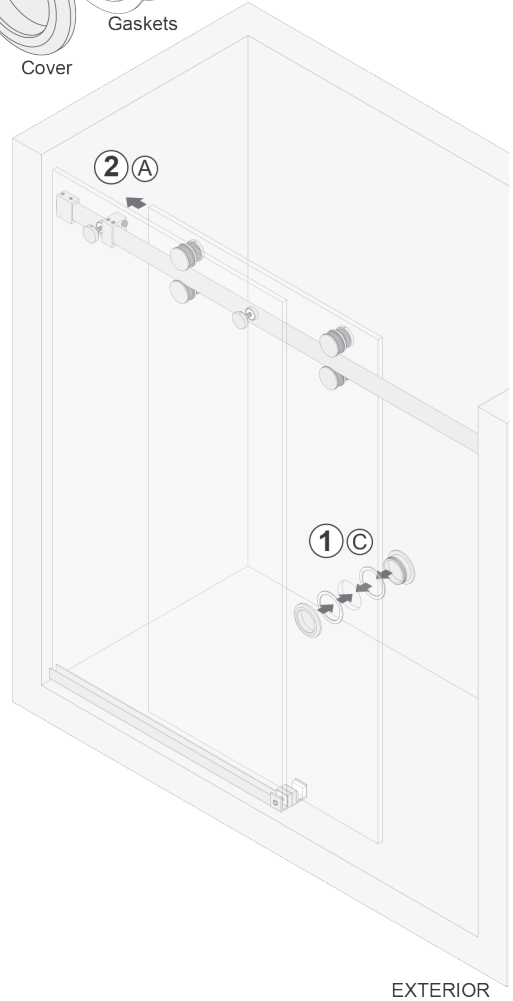
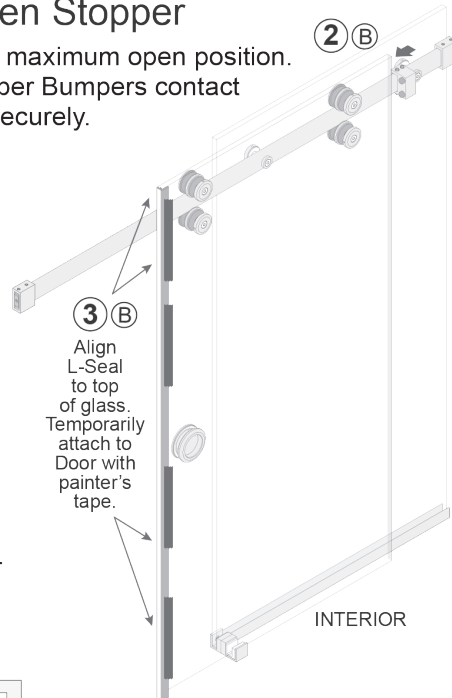
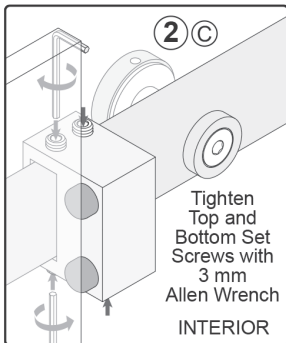


Hold Base while turning Cover counter-clockwise to loosen and clockwise to tighten.



Position and Tighten Stopper

- 2 Move Door to desired maximum open position. Slide Stopper so Rubber Bumpers contact Door Panel. Tighten securely.



Install L-Seal

- 3 Cut and install L-Seal.

NOTE: Temporarily attach L-Seal to Sliding Door and use as guide for final position.

